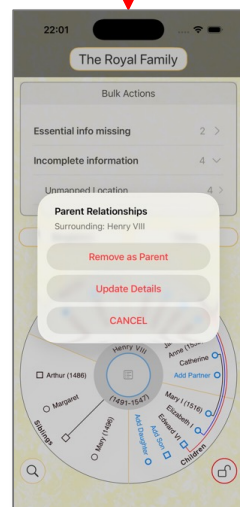


A8. Add Detail & Change Relationships

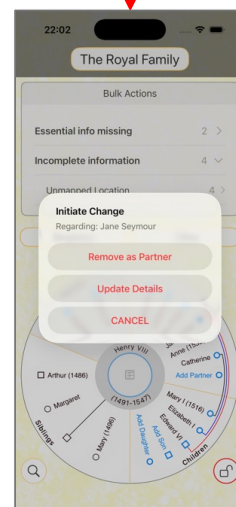
1. Tap 'Closed Lock' to enter edit-mode.



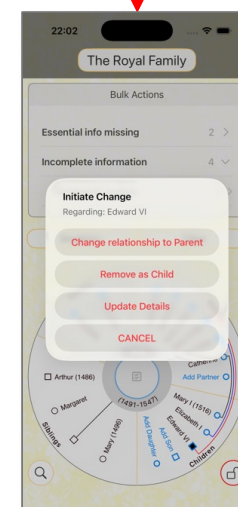
2a. Tap a Parent icon to remove them.



2b. Tap a Partner icon to change their relationship to a child or the focal person.

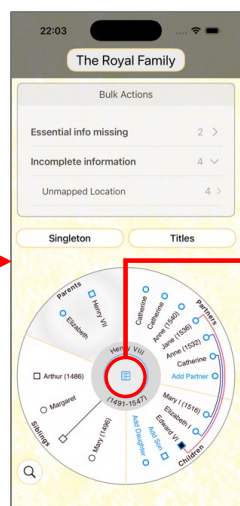


2c. Tap a Child icon to change their relationship to a Partner or the focal parent

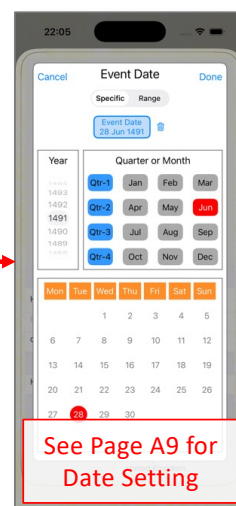
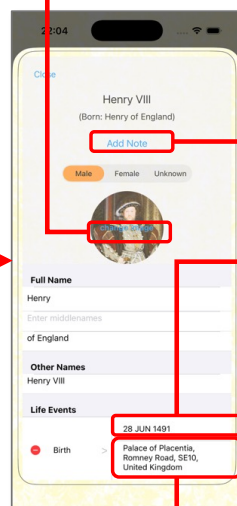


Tip: The Edit Relationships pop-up also lets you update details for the relative without first having to bring them to the centre of the circle. A useful time-saver.

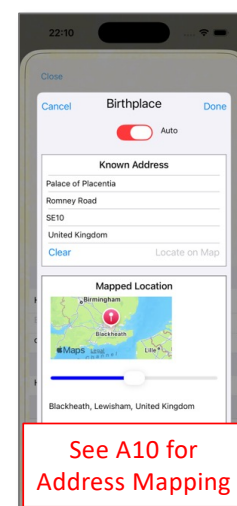
3. Tap the centre of the Wheel to add and change details about the Focal Person



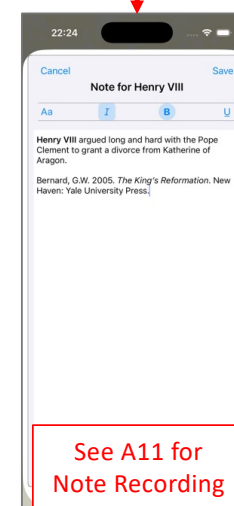
Tip: A double-tap on any of the icons around the Wheel brings that person to the centre for editing.



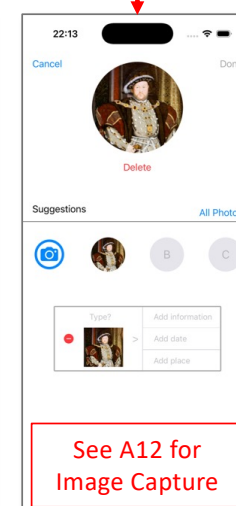
See Page A9 for Date Setting



See A10 for Address Mapping



See A11 for Note Recording



See A12 for Image Capture